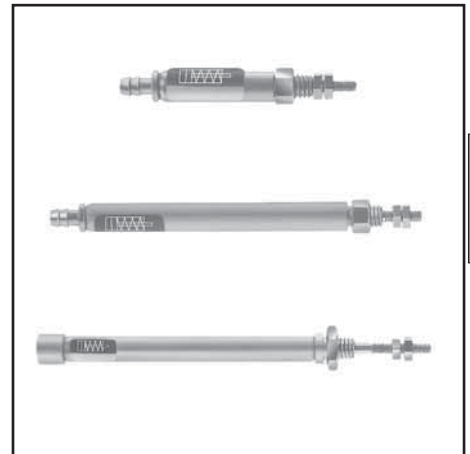


**GENERAL**

**Fluid** Air or neutral gas, filtered at 5µm, lubricated or not  
**Operating pressure** min. 3.5 (3 bar for Ø 6 mm)  
 max. 8 bar  
**Ambient temperature** + 5°C to + 60°C

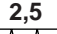
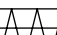
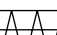
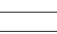
**CONSTRUCTION**


**Tube** Nicked brass  
**Piston seals** NBR (nitrile)  
**Rod** Acier inoxydable  
**Spring (single acting)** Acier  
**Supplied with 2 rod-nuts**



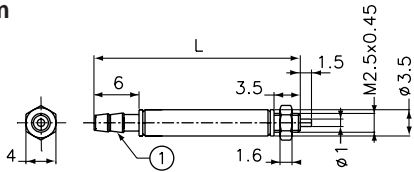
**B**

**SPECIFICATIONS**

Ø (mm)	stroke (mm)	weight (kg)	connection Ø	operating pressure (bar)		min. force at 8 bar (N)	extend force (N)		catalogue number
				min.	max.		min.	max.	
 2,5	5	0,0015	hose for 2mm int.-dia. tube	3,5	8	2,5	0,65	1,2	<b>43500460</b>
	10	0,0019					0,65	1,2	<b>43500461</b>
 4	5	0,0034	hose for 2mm int.-dia. tube	3,5	8	7	1,5	2,9	<b>43500462</b>
	10	0,0044					1,5	2,9	<b>43500463</b>
	15	0,0052					1,5	2,9	<b>43500464</b>
	20	0,0061					1,5	2,9	<b>43500465</b>
 6	5	0,010	M3 tapped type	3	8	17	3,0	5,3	<b>43500466</b>
	10	0,012					2,9	5,3	<b>43500467</b>
	15	0,015					2,9	5,3	<b>43500468</b>
	20	0,018					2,9	5,3	<b>43500469</b>
	25	0,021					3,0	5,3	<b>43500470</b>
 6	5	0,010	M3 tapped type	3	8	22	-	-	<b>43500500</b>
	10	0,012					-	-	<b>43500501</b>
	15	0,015					-	-	<b>43500502</b>
	20	0,018					-	-	<b>43500503</b>
	25	0,021					-	-	<b>43500504</b>

**DIMENSIONS (mm), WEIGHT (kg)** 

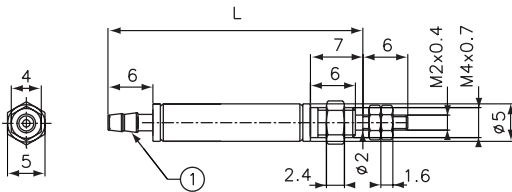
**Ø 2,5 mm**



**Scale 1**

stroke	L	weight
5	27,5	0,002
10	34	0,003

**Ø 4 mm**

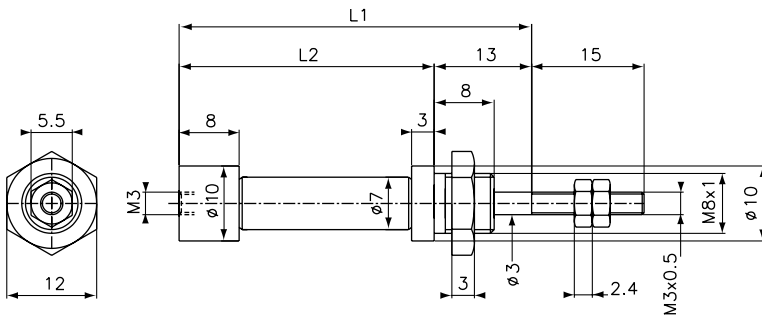


**Scale 1**

stroke	L	weight
5	34	0,004
10	40	0,005
15	47	0,006
20	52	0,007

① Hose for flexible tube in. Ø 1,8 or 2 mm

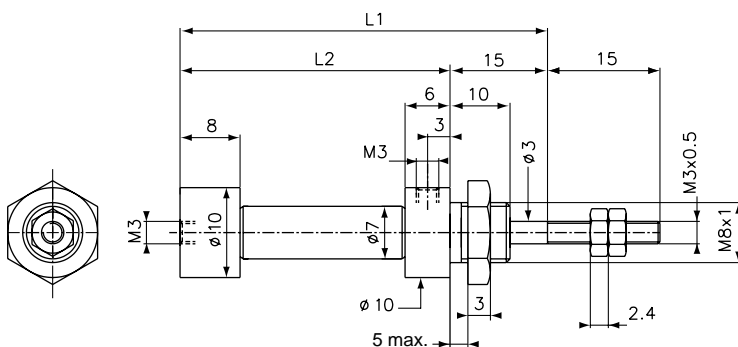
**Ø 6 mm - single acting**



**Scale 1**

stroke	single acting		double acting		weight
	L1	L2	L1	L2	
5	47	34	49	34	0,020
10	52	39	54	39	0,021
15	58	45	59	44	0,022
20	65	52	64	49	0,024
25	73	60	69	54	0,026

**Ø 6 mm - double acting**



**Scale 1**